



Designer's
LIGHT BOX™

LAMPSHADES



LAMPSHADES BY *Designer's* LIGHT BOX™

Beautiful hand crafted shades can bring table and floor lamps, as well as wall and ceiling fittings alive with vibrant colours or classic pleats.

We are delighted to offer a comprehensive collection of hundreds of shape and size options, in almost 240 beautifully coloured, stocked fabrics. Combined with 50 years of metalwork skills from the Elstead factory, we are dedicated to developing a bigger and better bespoke shade service over the coming years.

See our new hospitality shade section on page 35.

CONTENTS



p4 How to specify a laminated shade

p6 Laminated shades - shapes and sizes

p8 Choosing a gimble

p9 Choosing the fabric

- p10-11 Silks
- p12-13 Faux Silks
- p14 Polycottons
- p15 Velvets
- p16-17 Satins
- p18-19 Soft Textures, Linens, Herringbones
- p20-23 Floral Patterns
- p23 Country Prints
- p24-27 Patterns
- p28-29 Children's Prints



p30 Laminates, Diffusers and Trims

p31 More custom options
Recovers, non-standard frame sizes, customer own fabric

p32 Soft lined pleated shades

p34 Clip shades

p35 Hospitality shades and fixtures

- p36-39 Wall Lights
- p40-43 Pendants
- p44-46 Ceiling Flushes

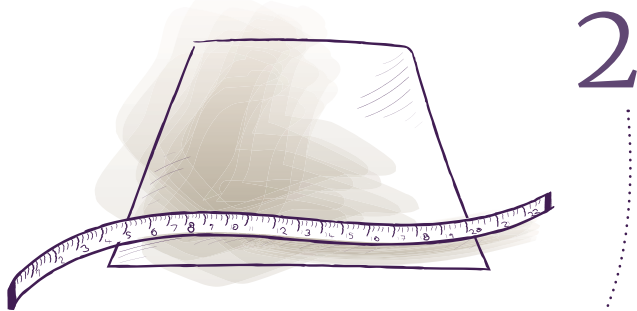
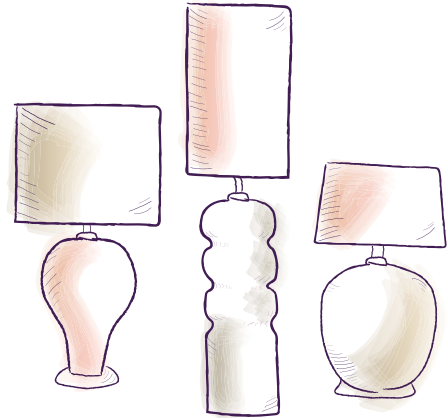


HOW TO SPECIFY A LAMINATED SHADE IN 8 STEPS

1 CHOOSE THE STYLE & SHAPE

Generally, a standard table lamp will use a shade width that matches the height of the base below. But this is a subjective choice. Some people may prefer long and linear shades if they have a large space to fill and some people might under-shade to fit in a limited space.

When replacing an old shade we require measurements including the diameter of the shade rings at the base and top of the shade as well as the length of the slope or vertical height.

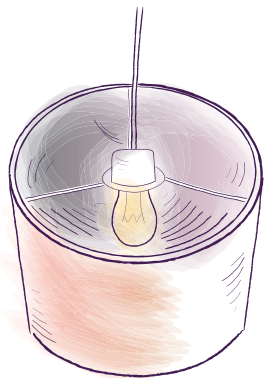
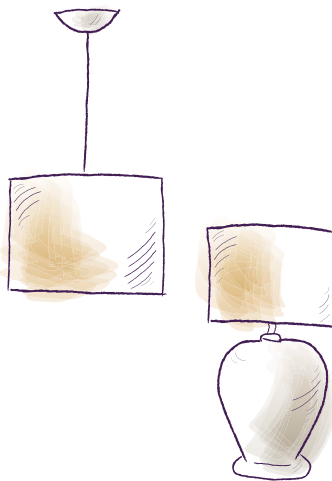


2 CHOOSE THE SIZE NEEDED

Shades typically increase in 2 inch increments and are measured at the widest width (usually the base). Shades are still traditionally measured in inches and you will see these alongside the metric measurements on pages 6-7.

3 CHOOSE THE PURPOSE

It is important to specify if the shade is intended to be used for a Ceiling Pendant or for a Table/Floor Lamp, so that the correct gimble can be used.



4 CHOOSE THE GIMBLE

The Gimble is the hanging or support frame inside the lampshade. Our standard shades are supplied with a 42mm holed gimble to suit E27 lamp-holders. Each gimble comes with a reducer ring which can be used with the Bayonet cap (B22) lamp-holders. The standard Pendant or Table/Floor Lamp Gimble will be selected once the purpose is identified. To see our additional options see page 8.

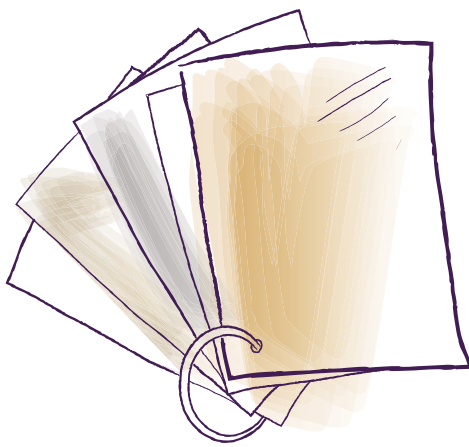
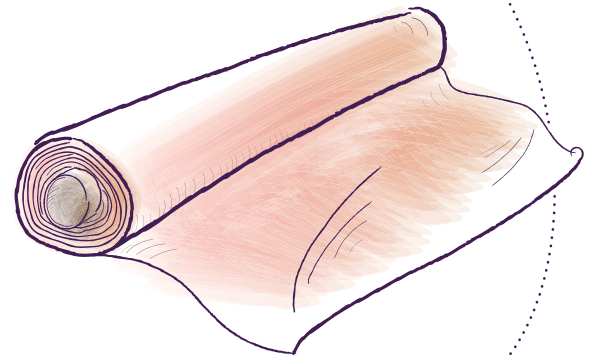
5 CHOOSE THE FABRIC

We have a choice of nearly 240 fabrics held in stock. They are grouped into 9 pricing bands A-J to help decide budget.

In our Plains collection you can choose from luxury silks, satins and velvets as well as more affordable faux silks, textured satins, linens and polycottons.

Our Patterns collection offers subtle self-patterns in a variety of colours, traditional florals, country prints, geometric designs as well as a fun collection of 17 shade materials suitable for children's rooms.

See pages 9-29 for our comprehensive offering.



6 CHOOSE THE LAMINATE

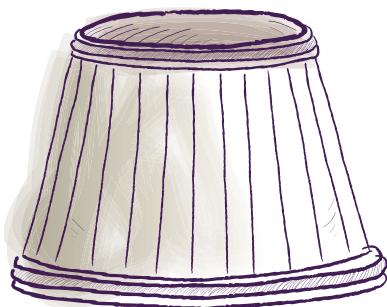
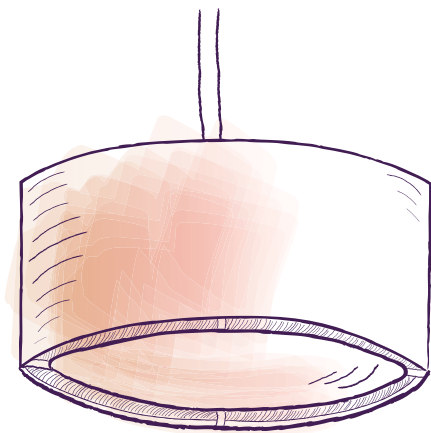
All laminated hard shades come with white laminate lining as standard. This allows some light to filter through the shade. A clear laminate can be specified at no extra cost, and options of opaque metallic laminates in gold, silver, or champagne are available.

For more information see page 30.

7 CONSIDER A DIFFUSER

If you prefer not be able to see the light bulb inside an open pendant, then consider a diffuser.

For options see page 30.



8 CONSIDER TRIMS

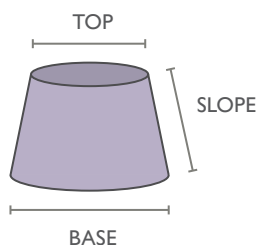
You can add a flash of colour to a laminated or pleated shade with a special trim. We have four Russia trims available. Alternatively, you can specify or supply your own custom taped edge trim or ribbon.

See page 31 for more information.

LAMINATED SHADES - SHAPES AND SIZES

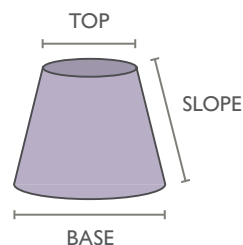


LAMINATED SHALLOW EMPIRE



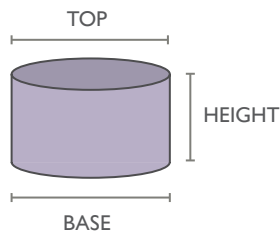
Code	Size	BASE	TOP	SLOPE
DL-LSE8	8"	20 cm	15 cm	13 cm
DL-LSE10	10"	25 cm	19 cm	16 cm
DL-LSE12	12"	30 cm	21 cm	18 cm
DL-LSE14	14"	35 cm	23 cm	21 cm
DL-LSE16	16"	41 cm	25 cm	23 cm
DL-LSE18	18"	46 cm	28 cm	26 cm
DL-LSE20	20"	51 cm	32 cm	29 cm
DL-LSE22	22"	56 cm	34 cm	32 cm

LAMINATED TALL EMPIRE



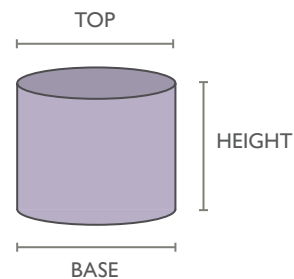
Code	Size	BASE	TOP	SLOPE
DL-LTE8	8"	20 cm	12 cm	16 cm
DL-LTE10	10"	25 cm	13 cm	19 cm
DL-LTE12	12"	30 cm	16 cm	22 cm
DL-LTE14	14"	35 cm	18 cm	23 cm
DL-LTE16	16"	41 cm	20 cm	26 cm
DL-LTE18	18"	46 cm	23 cm	28 cm
DL-LTE20	20"	51 cm	26 cm	31 cm
DL-LTE22	22"	56 cm	28 cm	36 cm

LAMINATED SHALLOW DRUM



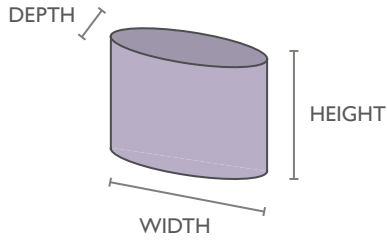
Code	Size	BASE	TOP	HEIGHT
DL-LSD10	10"	25 cm	25 cm	16.5 cm
DL-LSD12	12"	30 cm	30 cm	17 cm
DL-LSD14	14"	35 cm	35 cm	19 cm
DL-LSD16	16"	41 cm	41 cm	20 cm
DL-LSD18	18"	46 cm	46 cm	21 cm
DL-LSD20	20"	51 cm	51 cm	22.5 cm
DL-LSD22	22"	56 cm	56 cm	24 cm

LAMINATED DRUM



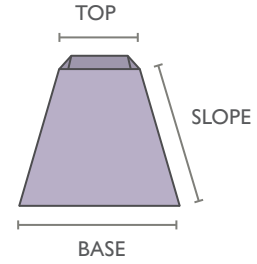
Code	Size	BASE	TOP	HEIGHT
DL-LD8	8"	20 cm	20 cm	16 cm
DL-LD10	10"	25 cm	25 cm	18 cm
DL-LD12	12"	30 cm	30 cm	20 cm
DL-LD14	14"	35 cm	35 cm	23 cm
DL-LD16	16"	41 cm	41 cm	25 cm
DL-LD18	18"	46 cm	46 cm	27 cm
DL-LD20	20"	51 cm	51 cm	30 cm
DL-LD22	22"	56 cm	56 cm	32 cm

LAMINATED OVAL



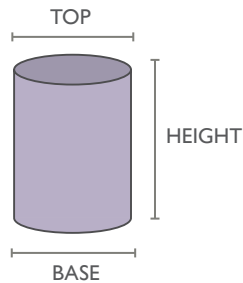
Code	Size	WIDTH	DEPTH	HEIGHT
DL-LOVAL10	10"	25 cm	16 cm	18 cm
DL-LOVAL12	12"	30 cm	20 cm	20 cm
DL-LOVAL14	14"	35 cm	23 cm	24 cm
DL-LOVAL16	16"	41 cm	27 cm	25 cm
DL-LOVAL18	18"	46 cm	29 cm	28 cm

LAMINATED TAPERED SQUARE



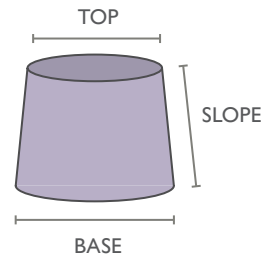
Code	Size	BASE	TOP	SLOPE
DL-LTSQ10	10"	25 cm	12 cm	23 cm
DL-LTSQ12	12"	30 cm	15 cm	28 cm
DL-LTSQ14	14"	35 cm	18 cm	30 cm
DL-LTSQ16	16"	41 cm	20 cm	36 cm
DL-LTSQ18	18"	46 cm	25 cm	40 cm

LAMINATED TALL DRUM



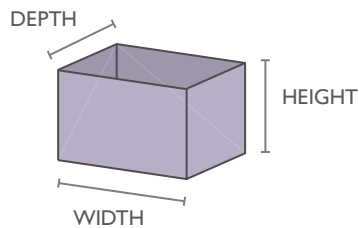
Code	Size	BASE	TOP	HEIGHT
DL-LTALLD8	8"	20 cm	20 cm	30 cm
DL-LTALLD10	10"	25 cm	25 cm	35 cm
DL-LTALLD12	12"	30 cm	30 cm	40 cm
DL-LTALLD14	14"	35 cm	35 cm	45 cm
DL-LTALLD16	16"	41 cm	41 cm	50 cm
DL-LTALLD18	18"	46 cm	46 cm	55 cm
DL-LTALLD20	20"	51 cm	51 cm	60 cm
DL-LTALLD22	22"	56 cm	56 cm	65 cm

LAMINATED TAPERED DRUM



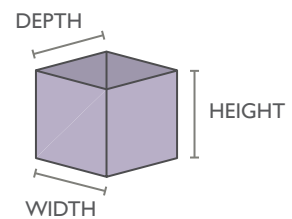
Code	Size	BASE	TOP	SLOPE
DL-LTD10	10"	25 cm	20 cm	18 cm
DL-LTD12	12"	30 cm	25 cm	21 cm
DL-LTD14	14"	35 cm	30 cm	23 cm
DL-LTD16	16"	41 cm	35 cm	26 cm
DL-LTD18	18"	46 cm	40 cm	30 cm
DL-LTD20	20"	51 cm	46 cm	32 cm

LAMINATED RECTANGLE



Code	Size	WIDTH	DEPTH	HEIGHT
DL-LREC8	8"	20 cm	12 cm	14 cm
DL-LREC10	10"	25 cm	15 cm	18 cm
DL-LREC12	12"	30 cm	18 cm	20 cm
DL-LREC14	14"	35 cm	20 cm	23 cm
DL-LREC16	16"	41 cm	24 cm	25 cm
DL-LREC18	18"	46 cm	28 cm	28 cm

LAMINATED SQUARE



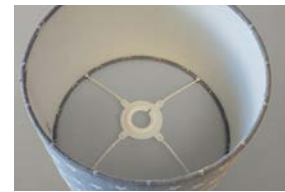
Code	Size	WIDTH	DEPTH	HEIGHT
DL-LSQ8	8"	20 cm	20 cm	17 cm
DL-LSQ10	10"	25 cm	25 cm	20 cm
DL-LSQ12	12"	30 cm	30 cm	25 cm
DL-LSQ14	14"	35 cm	35 cm	30 cm
DL-LSQ16	16"	41 cm	41 cm	30 cm
DL-LSQ18	18"	46 cm	46 cm	30 cm

CHOOSING A GIMBLE

The Gimble is the hanging or support frame inside the lampshade. Our standard shades are supplied with a 42mm holed gimble to suit E27 lamp-holders. Each gimble comes with a reducer ring which can be used with the Bayonet cap (B22) lamp-holders. The standard Pendant or Table/Floor Lamp Gimble will be selected once the purpose is identified. For additional options see below.



Standard Hanging Gimble



Standard Table Lamp Gimble

SPECIAL ORDER GIMBLE OPTIONS

REVERSIBLE GIMBLES

Reversible Gimbles can be converted from a table lamp style to a ceiling pendant style by a simple click and move mechanism. (Available in frames up to 14" diameter).



HARP AND FINIAL

Harp and Finial style gimbles are typically used on USA styled Table or Floor Lamps that have a finial to secure the gimble at the top.



DUPLEX GIMBLES



Duplex Fittings are used in tandem with Shade Carriers which are available in 7 height sizes. They are typically used on traditional shades so that you can choose the amount of stem that you show at the top of your vase or statuette.

SHADE CARRIERS

Code	Size
SHADE-CARRIER-4	4"
SHADE-CARRIER-5	5"
SHADE-CARRIER-6	6"
SHADE-CARRIER-7	7"
SHADE-CARRIER-8	8"
SHADE-CARRIER-9	9"
SHADE-CARRIER-10	10"



We have a range of shade carriers that start at 4 inches up to 10 inches. All are made for standard E27 lamp holders, but again, you will be issued with shade reducers if you require them for an older light that has an E14 or bayonet cap (B22) lamp holder.

NB. Soft pleated shades (between 12-22") come supplied with the Duplex style gimble as standard.

CHOOSING THE FABRIC

We have a choice of almost 240 fabrics held in stock. There are many beautiful vibrant colours and textures to bring accent colours into your interior design schemes or simple, more traditional colours to blend into your room.

The swatches in this catalogue may vary from the true colour of the fabrics they represent. Before placing your order please request a fabric sample from shades@elsteadlighting.com. Separate Plain and Patterned fabric books are available for trade customers to purchase.

Our fabrics are grouped into nine pricing bands ranked A-J. These are referenced in brackets after the fabric names to make it easy to choose a fabric based on your budget. Please refer to our price list for more information.



NEUTRALS



PASTELS



JEWELS



POPS

SILKS

This premium fine fabric is made of 100% Indian Douppion Silk and features natural slubs in the weave. These 32 stock colours are perfect for hard or soft pleated shades.





Dove Grey (E)
DL-010PLN001



Camel (E)
DL-010PLN002



Silver (E)
DL-010PLN003



Gunmetal (E)
DL-010PLN004



Peacock (E)
DL-010PLN005



Pebble (E)
DL-010PLN006



Banana (E)
DL-010PLN007



Twilight (E)
DL-010PLN008



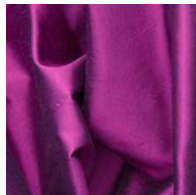
Ivory (E)
DL-010PLN009



Black (E)
DL-010PLN010



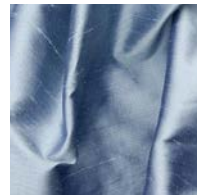
Melba (E)
DL-010PLN011



Magenta (E)
DL-010PLN012



White (E)
DL-010PLN013



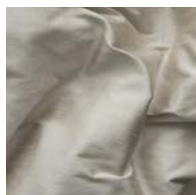
Cornflower (E)
DL-010PLN014



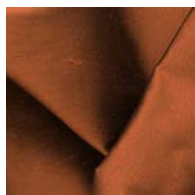
Putty (E)
DL-010PLN015



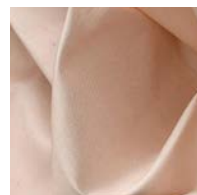
Apricot (E)
DL-010PLN016



Feather (E)
DL-010PLN017



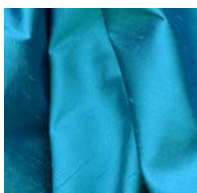
Burnt Orange (E)
DL-010PLN018



Orchid (E)
DL-010PLN019



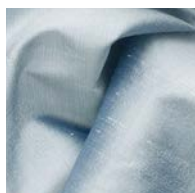
Evergreen (E)
DL-010PLN020



Turquoise (E)
DL-010PLN021



Insignia (E)
DL-010PLN022



Star (E)
DL-010PLN023



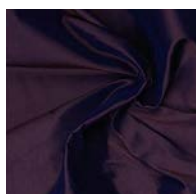
Moss (E)
DL-010PLN024



Kiwi (E)
DL-010PLN025



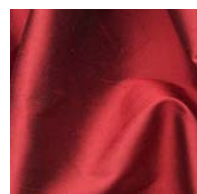
Willow (E)
DL-010PLN026



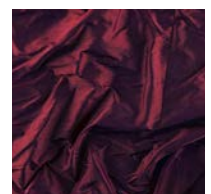
Berry (E)
DL-010PLN027



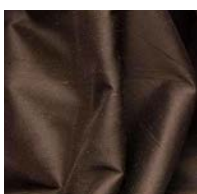
Prune (E)
DL-010PLN028



Burgundy (E)
DL-010PLN029



Wine (E)
DL-010PLN030



Chocolate (E)
DL-010PLN031



Flame (E)
DL-010PLN032

If you can't see the colour you're looking for
ask our shades team for special order options.

FAUX-SILKS

Our faux silk collection is made of 100% polyester but still includes a slub in the weave. These stock colours are perfect for hard or soft pleated shades.



Fabric shown: Pumpkin, Aubergine and Bone.

TEXTURE 1



Aubergine (A)
DL-030PLN065



Olive (A)
DL-030PLN066



Ivory (A)
DL-030PLN067

TEXTURE 2



Dove (B)
DL-040PLN068



Bone (B)
DL-040PLN069



Mint (B)
DL-040PLN070

TEXTURE 3



Origami (B)
DL-020PLN033



Light Ivory (B)
DL-020PLN034



Coconut (B)
DL-020PLN036



Scallop (B)
DL-020PLN037



Reindeer (B)
DL-020PLN038



Irish Cream (B)
DL-020PLN039



Hepplewhite (B)
DL-020PLN040



Titanium (B)
DL-020PLN041



Whale (B)
DL-020PLN042



Larkspur (B)
DL-020PLN043



Black (B)
DL-020PLN044



Grapefruit (B)
DL-020PLN045



Loaf (B)
DL-020PLN046



Pesto (B)
DL-020PLN047



Sour Green (B)
DL-020PLN048



Celandine (B)
DL-020PLN049



Chateau (B)
DL-020PLN050



Botanic (B)
DL-020PLN051



Shale Green (B)
DL-020PLN052



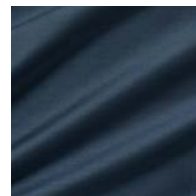
Surf Spray (B)
DL-020PLN053



Liberty (B)
DL-020PLN054



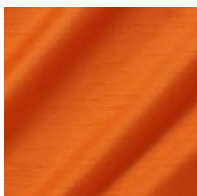
Voyage (B)
DL-020PLN055



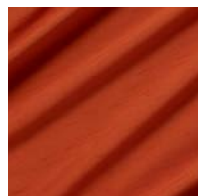
Breton (B)
DL-020PLN056



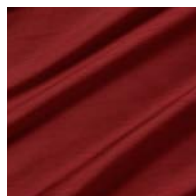
Navy (B)
DL-020PLN057



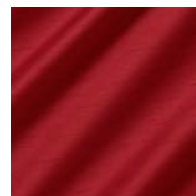
Pumpkin (B)
DL-020PLN058



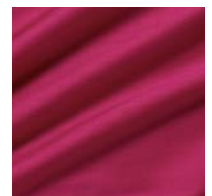
Clementine (B)
DL-020PLN059



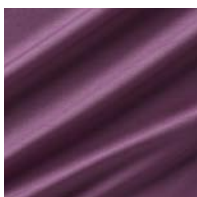
Medieval (B)
DL-020PLN060



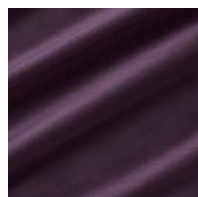
Cardinal (B)
DL-020PLN061



Love (B)
DL-020PLN062



Bloom (B)
DL-020PLN063



Calla Lily (B)
DL-020PLN064

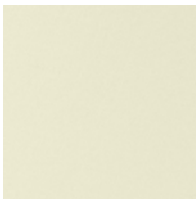
If you can't see the colour you're looking for
ask our shades team for special order options.

POLYCOTTONS

Our polycotton collection has many soft elegant colours and is suitable to make hard or soft pleated shades.



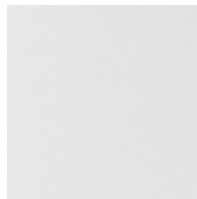
Fabric shown: Light Grey.



Ivory (A)
DL-090PLN134



Black (A)
DL-090PLN135



White (A)
DL-090PLN136



Mid Grey (A)
DL-050PLN137



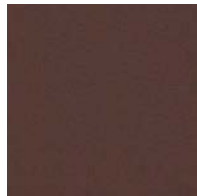
Light Grey (A)
DL-050PLN138



Stone (A)
DL-050PLN139



Beige (A)
DL-050PLN140



Dark Brown (A)
DL-050PLN141



Light Heather (A)
DL-050PLN142



Dark Heather (A)
DL-050PLN143



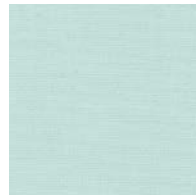
Deep Purple (A)
DL-050PLN144



Mid Blue (A)
DL-050PLN145



Baby Blue (A)
DL-050PLN146



Peppermint Green (A)
DL-050PLN147



Sage Green (A)
DL-050PLN148



Burnt Orange (A)
DL-050PLN149



Maroon (A)
DL-050PLN150

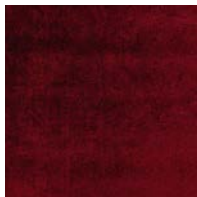
VELVETS

Once the chosen fabric of royalty and nobleman, velvet is a plush and luxurious weave. We offer both smooth and more rustic distressed velvet fabrics.



Fabric shown: Orizzonte, Vino and Terracotta.

SMOOTH VELVETS



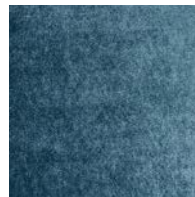
Vino (C)
DL-070PLN105



Rosa (C)
DL-070PLN106



Verde (C)
DL-070PLN107



Celeste (C)
DL-070PLN108



Violetto (C)
DL-070PLN109



Orizzonte (C)
DL-070PLN110



Cremisi (C)
DL-070PLN111

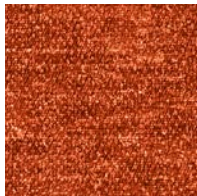


Bruno (C)
DL-070PLN112



Grigio (C)
DL-070PLN113

DISTRESSED VELVETS



Terracotta (B)
DL-080PLN114



Black (B)
DL-080PLN115



Claret (B)
DL-080PLN116



Duckegg (B)
DL-080PLN117



Gold (B)
DL-080PLN118



Grape (B)
DL-080PLN119



Navy (B)
DL-080PLN120



Olive (B)
DL-080PLN121



Pewter (B)
DL-080PLN122



SATIN TEXTURED

Our textured satin weave catches the light beautifully for a subtly unique patterned effect. Enquire about the other colour options available on special order.

Fabric shown: Aubergine.



Aubergine (C)
DL-060PLN088



Fog (C)
DL-060PLN089



Dove (C)
DL-060PLN090



Pearl (C)
DL-060PLN091



Champagne (C)
DL-060PLN092



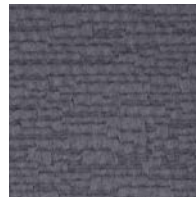
Rose (C)
DL-060PLN093



Fuchsia (C)
DL-060PLN094



Mulberry (C)
DL-060PLN095



Flint (C)
DL-060PLN096



Scarlet (C)
DL-060PLN097



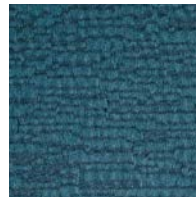
Rust (C)
DL-060PLN098



Zest (C)
DL-060PLN099



Pistachio (C)
DL-060PLN100



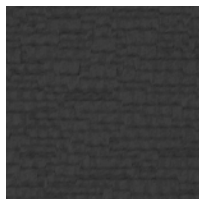
Teal (C)
DL-060PLN101



Indigo (C)
DL-060PLN102



Gold (C)
DL-060PLN103



Black (C)
DL-060PLN104

SATIN SMOOTH

This sophisticated smooth satin weave brings luxury into your room and is available in 17 fabulous colour options. Consider upgrading your shade with one of our metallic linings.



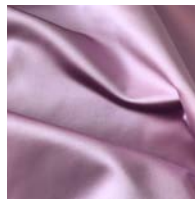
Fabric shown: Duckegg Blue.



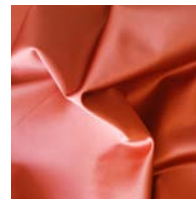
Off White (D)
DL-050PLN071



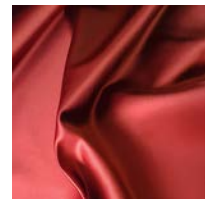
Cream (D)
DL-050PLN072



Heather (D)
DL-050PLN073



Orange (D)
DL-050PLN074



Red (D)
DL-050PLN075



Duckegg Blue (D)
DL-050PLN076



Aqua (D)
DL-050PLN077



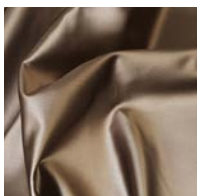
Sage (D)
DL-050PLN078



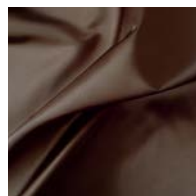
Khaki Gold (D)
DL-050PLN079



Champagne (D)
DL-050PLN080



Mocha (D)
DL-050PLN081



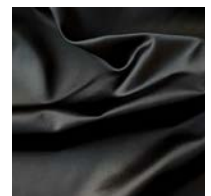
Chocolate (D)
DL-050PLN082



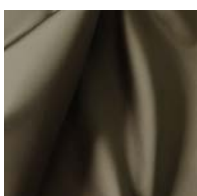
Silver (D)
DL-050PLN083



Slate (D)
DL-050PLN084



Black (D)
DL-050PLN085



Dark Khaki (D)
DL-050PLN086



Green Ochre (D)
DL-050PLN087

SOFT TEXTURE

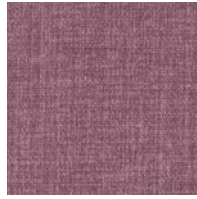
This beautiful soft textured fabric is available in 3 colour options and is ideal for a cosy cottage snug.



Cherry (C)
DL-040PLN123



Lagoon (C)
DL-040PLN125



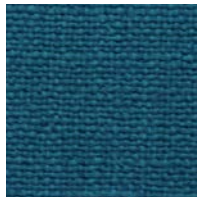
Thistle (C)
DL-040PLN126

LINEN

Linen has a broader weave which allows more light to come through the shade. Choose from these 7 muted tones for a simple country or coastal look.



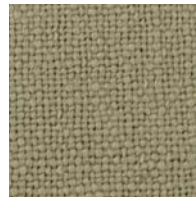
Sherborne Linen (C)
DL-030PLN127



Mermaid (C)
DL-080PLN128



Orchid (C)
DL-080PLN129



Whisper (C)
DL-080PLN130



Grey (C)
DL-050PLN131



Oatmeal (C)
DL-050PLN132



Midnight Blue (C)
DL-050PLN133

HERRINGBONE

Choose from our selection of traditional fine herringbone weave fabrics to add class to any country interior.



Malabar Pine (C)
DL-040PAT077



Malabar Taupe (C)
DL-040PAT078



Malabar Cocoa (C)
DL-040PAT079



Malabar Shadow (C)
DL-040PAT080



Malabar Thistle (C)
DL-040PAT081



Fabric shown: Mermaid, Cherry and Malabar Pine.

FLORAL PATTERNS

Our beautiful collection of floral patterns offers both classical and contemporary styles to blend into a variety of interior settings.

Fabric shown: Kado Haru, Kado Natsu and Kado Fuyu.





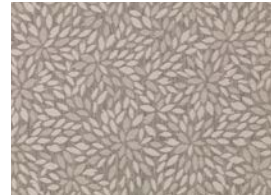
Kado Haru (Teal) (C)
DL-070PAT044



Kado Natsu (Ochre) (C)
DL-070PAT045



Kado Fuyu (Silver) (C)
DL-070PAT046



Hawthorne Slate (B)
DL-080PAT047



Hawthorne Cream (B)
DL-080PAT048



Hawthorne Heather (B)
DL-080PAT049



Mason Natural (B)
DL-080PAT050



Mason Duckegg (B)
DL-080PAT051



Mason Grey (B)
DL-080PAT052



Baxter Ochre (B)
DL-080PAT056



Baxter Silver (B)
DL-080PAT057



Baxter Biscuit (B)
DL-080PAT058

N.B. For a more subtle pattern, Baxter fabrics can be made on the reverse. Please see image below for example. When ordering, please specify.



Fabric shown: Mason Natural, Baxter Ochre (made with reverse side) and Hawthorne Slate

CLASSIC FLORALS

A selection of traditional and country floral patterns which are a perfect match for country interiors.

Fabric shown: Hartley Duckegg.



Hartley Duckegg (B)
DL-080PAT053



Hartley Charcoal (B)
DL-080PAT054



Hartley Linen (B)
DL-080PAT055



Meadow Cornflower (C)
DL-070PAT063



Meadow Mallow (C)
DL-070PAT064





Bilbury Heather (B)
DL-030PAT061



Boxgrove Teal (B)
DL-030PAT062



Fabric shown: Bilbury Heather.

COUNTRY PRINTS

These rustic country fabrics would perfectly suit a cosy cottage setting. They are available in 6 different themes on a neutral linen fabric.



Natural Pheasant (A)
DL-030PAT069



Natural Hartley Hare (A)
DL-030PAT070



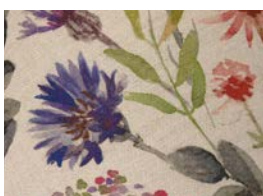
Natural Mallard (A)
DL-030PAT072



Natural Pooch (A)
DL-030PAT071



Linen Butterflies (A)
DL-030PAT073



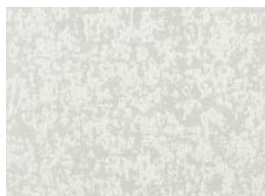
Floral Cornflower (C)
DL-100PAT059



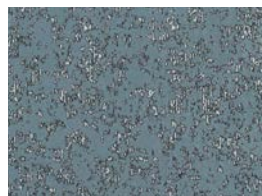
PATTERNS

We are delighted to present our collection of patterned fabrics. There are many fabulous colours, textures and prints to choose from which are suitable for traditional or contemporary interiors.





Igneous Ice (F)
DL-060PAT007



Igneous Danube (F)
DL-060PAT008



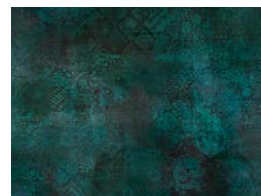
Igneous Moonstone (F)
DL-060PAT009



Moulin Smokey (D)
DL-070PAT013



Moulin Splendour (D)
DL-070PAT014



Moulin Emerald (D)
DL-070PAT015



Topaz Rose Quartz (D)
DL-020PAT016



Topaz Mink (D)
DL-020PAT017



Topaz Neutral Blush (D)
DL-020PAT018

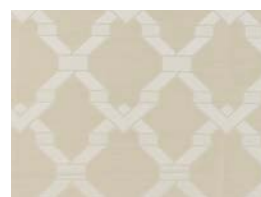
N.B. The Overture motif measures 18cm high. It is best used on taller/larger drum shades.



Overture Thistle (C)
DL-040PAT022



Overture Silver (C)
DL-040PAT023



Overture Vanilla (C)
DL-040PAT024



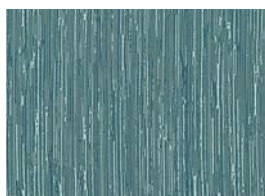
Linear Burnt Orange (A)
DL-030PAT031



Linear Antique (A)
DL-030PAT032



Linear Silver (A)
DL-030PAT033



Reflection Surf (C)
DL-070PAT034



Reflection Albin (C)
DL-070PAT035



Reflection Flan (C)
DL-070PAT036



Reflection Fog (C)
DL-070PAT037



Reflection Thyme (C)
DL-070PAT038



Reflection Sparrow (C)
DL-070PAT039



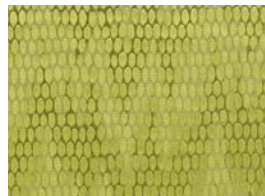
Fabric shown: Piazza Summer Breeze (p27), Feather Duckegg, Osprey Grayling, Erla Sage and Reflection Surf (p25).



Osprey Grayling (J)
DL-020PAT001



Osprey Plume (J)
DL-020PAT002



Osprey Kelp (J)
DL-020PAT003



Cinnabar Ink (H)
DL-060PAT004



Cinnabar Truffle (H)
DL-060PAT005



Cinnabar Slate (H)
DL-060PAT006



Feather Duckegg (A)
DL-030PAT010



Feather Natural (A)
DL-030PAT011



Feather Ivory (A)
DL-030PAT012



Erla Sage (D)
DL-060PAT019



Erla Truffle (D)
DL-060PAT020



Erla Graphite (D)
DL-060PAT021



Fabric shown: Igneous Ice, Cinnabar Ink (p26), Guggenheim Bronze, Gherkin Sandstone and Taipei Ivory.



Guggenheim Bronze (C)
DL-040PAT025



Guggenheim Chrome (C)
DL-040PAT026



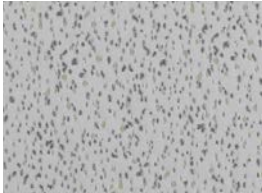
Taipei Ivory (C)
DL-040PAT027



Taipei Quartz (C)
DL-040PAT028



Gherkin Sandstone (C)
DL-040PAT029



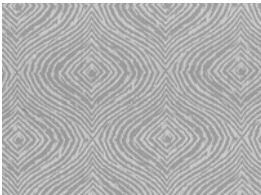
Gherkin Bronze (C)
DL-040PAT030



Piazza Summer Breeze (C)
DL-070PAT040



Piazza White Mist (C)
DL-070PAT041



Piazza Silent Steel (C)
DL-070PAT042



Piazza Summer Medley (C)
DL-070PAT043



CHILDREN'S PRINTS

This collection of printed colourful fabrics is ideally suited for children's bedrooms and playrooms. Due to pattern print, there may be width restrictions on some frame shapes. Please check before ordering.

Fabrics shown: Small Owls Multi, Shoal Blue and Ladybird Multi.



Noah Rainbow (C)
DL-070PAT082



Noah Ocean (C)
DL-070PAT083



Birds Multi (A)
DL-030PAT084



Owls Blue (A)
DL-030PAT085



Owls Multi (A)
DL-030PAT086



Shoal Blue (A)
DL-030PAT087



VW Campervan Blue (A)
DL-030PAT088



Ladybird Multi (A)
DL-030PAT089



Newport Navy (B)
DL-060PAT093



Newport Strawberry (B)
DL-060PAT094



Newport Candyfloss (B)
DL-060PAT095



Newport Seafoam (B)
DL-060PAT096



Small Owls Multi (A)
DL-080PAT097



Beach Hut Multi (A)
DL-080PAT098



Cupcake Multi (A)
DL-080PAT099



Hippies Multi (A)
DL-080PAT100



Jurassic Black (A)
DL-080PAT101



Fabrics shown: Newport Navy, Jurassic Black
and VW Campervan Blue.



Fabrics shown: Cupcake Multi, Birds Multi and
Noah Rainbow.

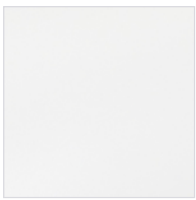
LAMINATE OPTIONS

All laminated hard shades come with white laminate lining as standard. This allows some light to filter through the shade.

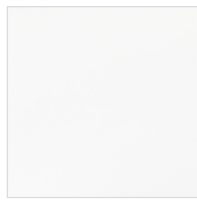
If more light is required you can specify the clear laminate for no extra cost.

UPGRADE LAMINATE

Should you wish to have a matt metallic laminate lining in gold, silver, or champagne, this blocks out the light to the side of the shade and creates an up and down lighting effect from the top and bottom of the shade. Mirrored gold and silver laminates are available on special order.



DL-WHT-LINING



DL-CLEAR-LINING



DL-GOLD-LINING



DL-CHAMP-LINING



DL-SILV-LINING

DIFFUSER OPTIONS

If you prefer not to be able to see the light bulb inside an open pendant, then consider a diffuser that rests in the lower ring.

TYPE 1 - OPAL ACRYLIC DIFFUSER

Code	Size
DL-DIF1OPAL8	8" (20cm)
DL-DIF1OPAL10	10" (25cm)
DL-DIF1OPAL12	12" (30cm)
DL-DIF1OPAL14	14" (35cm)
DL-DIF1OPAL16	16" (41cm)
DL-DIF1OPAL18	18" (46cm)
DL-DIF1OPAL20	20" (51cm)
DL-DIF1OPAL22	22" (56cm)

TYPE 2 - BAFFLE DIFFUSER

This diffuser can be made in matching or contrasting material. The fabrics available are silk, faux-silk and polycotton.

See our price list for a full list of options and codes.



SHADE TRIMS

You can add a flash of colour to a plain pleated or laminated shade with a special trim. These are our standard stock Russia trims, however you can specify or supply your own custom trim or ribbon.



Black & Gold
DL-BLKG-TRIM



Black
DL-BLK-TRIM



Gold
DL-GOLD-TRIM



Burgundy & Gold
DL-BDYG-TRIM



MORE CUSTOM SHADE OPTIONS



1

RECOVER FRAME SERVICE

For special antique lamps that have unusual shade shapes and sizes, or older fittings whose shades are tired and dirty – Elstead can offer a Recover Frame Service. Simply send in your shade with your specification of fabric.

2

CUSTOM MADE FRAMES

For those projects that demand larger shades, Elstead offer a service that utilises their 50 years of metalworking, creating large bespoke manufactured frames for large homes and hospitality projects.

3

CUSTOM SHADES FOR ELSTEAD FIXTURES

Many shaded products in the Elstead Interior Collection 2019 can be customised to match your colour scheme. Simply enquire with the product code from the catalogue and your fabric choice, so we can check possibility and cost.

4

CUSTOMER'S OWN FABRIC

When you have a specific interior design scheme that requires a specialist print or fabric, you can provide our shade makers with your own choice of material. A sample must be supplied to check suitability of fabric for shades and fabric must be supplied on a roll to prevent damage to the material.

N.B. Some fabrics will not make good laminate shades. This includes thick fabrics, those containing wool, multiple long-stitched weaves and large repeat patterns.

Send your custom made shade enquiries to shades@elsteadlighting.com

SOFT LINED SHADES - HANDMADE IN THE UK

The classic soft tall empire shade can be crafted with a variety of pleat options including the very popular box pleat or pencil pleat (sometimes known as a fine or knife pleat).

These soft shades are supplied with a Duplex gimble as standard. Shade carriers are supplied except for 8" and 10" sizes which have fixed gimbles. You may specify a fixed gimble for the larger sizes or USA style harp and finial if required.



FABRIC OPTIONS

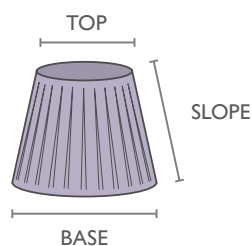
Shades can be made in Silk, Faux Silk and Polycotton.



BOX PLEAT

Shown in colour ref: DL-020PLN041
(Titanium Faux Silk)

SOFT TALL EMPIRE - BOX PLEAT



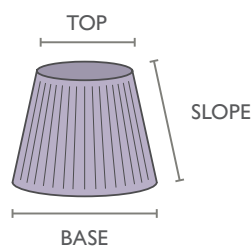
Code	Size	Shade carrier supplied	BASE	TOP	SLOPE
DL-STE8UK-BP	8"	Fixed	20 cm	13 cm	16 cm
DL-STE10UK-BP	10"	Fixed	25 cm	15 cm	19 cm
DL-STE12UK-BP	12"	5"	30 cm	17 cm	21 cm
DL-STE14UK-BP	14"	6"	35 cm	20 cm	25 cm
DL-STE16UK-BP	16"	7"	41 cm	23 cm	28 cm
DL-STE18UK-BP	18"	8"	46 cm	25 cm	31 cm
DL-STE20UK-BP	20"	9"	51 cm	28 cm	36 cm
DL-STE22UK-BP	22"	10"	56 cm	31 cm	38 cm



PENCIL PLEAT

Shown in colour ref: DL-020PLN036
(Coconut Faux Silk)

SOFT TALL EMPIRE - PENCIL PLEAT



Code	Size	Shade carrier supplied	BASE	TOP	SLOPE
DL-STE8UK-PP	8"	Fixed	20 cm	13 cm	16 cm
DL-STE10UK-PP	10"	Fixed	25 cm	15 cm	19 cm
DL-STE12UK-PP	12"	5"	30 cm	17 cm	21 cm
DL-STE14UK-PP	14"	6"	35 cm	20 cm	25 cm
DL-STE16UK-PP	16"	7"	41 cm	23 cm	28 cm
DL-STE18UK-PP	18"	8"	46 cm	25 cm	31 cm
DL-STE20UK-PP	20"	9"	51 cm	28 cm	36 cm
DL-STE22UK-PP	22"	10"	56 cm	31 cm	38 cm

SOFT LINED SHADES - HANDMADE OVERSEAS

Our standard shades are produced in 100% cotton fabric with an ivory acetate taffeta lining. All shapes and sizes are available in the Ivory (off-white) or Oyster colour. These stock items are hand-made overseas for Elstead.

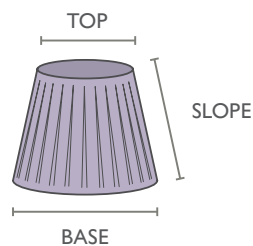
NB. All soft shades 12" and above are made for shade carriers.



BOX PLEAT

Shown in Ivory (-IV)
Also available in Oyster (-OY)

SOFT TALL EMPIRE - BOX PLEAT



Code	Size	Shade carrier supplied	BASE	TOP	SLOPE
DL-STE8-BP	8"	Fixed	20 cm	13 cm	16 cm
DL-STE10-BP	10"	Fixed	25 cm	15 cm	19 cm
DL-STE12-BP	12"	5"	30 cm	17 cm	21 cm
DL-STE14-BP	14"	6"	35 cm	20 cm	25 cm
DL-STE16-BP	16"	7"	41 cm	23 cm	28 cm
DL-STE18-BP	18"	8"	46 cm	25 cm	31 cm
DL-STE20-BP	20"	9"	51 cm	28 cm	36 cm
DL-STE22-BP	22"	10"	56 cm	31 cm	38 cm

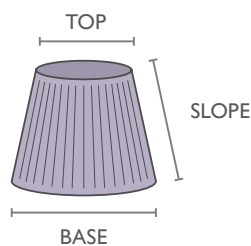
For an Ivory shade add a suffix of -IV to the code e.g. DL-STE8-BP-IV
For Oyster add -OY



PENCIL PLEAT

Shown in Oyster (-OY)
Also available in Ivory (-IV)

SOFT TALL EMPIRE - PENCIL PLEAT



Code	Size	Shade carrier supplied	BASE	TOP	SLOPE
DL-STE8-PP	8"	Fixed	20 cm	13 cm	16 cm
DL-STE10-PP	10"	Fixed	25 cm	15 cm	19 cm
DL-STE12-PP	12"	5"	30 cm	17 cm	21 cm
DL-STE14-PP	14"	6"	35 cm	20 cm	25 cm
DL-STE16-PP	16"	7"	41 cm	23 cm	28 cm
DL-STE18-PP	18"	8"	46 cm	25 cm	31 cm
DL-STE20-PP	20"	9"	51 cm	28 cm	36 cm
DL-STE22-PP	22"	10"	56 cm	31 cm	38 cm

For an Ivory shade add a suffix of -IV to the code e.g. DL-STE8-PP-IV
For Oyster add -OY

CLIP SHADES

BESPOKE LAMINATED CLIP SHADES

Available in Silk, Faux Silk and Polycotton, these clip shades are suitable for use with candle bulbs used on chandeliers and wall lights.



TALL DRUM CLIP

4" x 4" x 5.5" (105 x 105 x 140mm)
DL-LTD-CLIP



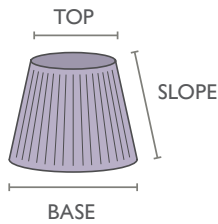
TALL EMPIRE CLIP

6" x 4" x 5" (152 x 105 x 127mm)
DL-LTE-CLIP



STOCKED SOFT CLIP SHADES

The selection of stock soft shades shown below are suitable for use with candle or golf ball shape bulbs often used on chandeliers and wall lights.



Shades are measured as
BASE x TOP x SLOPE



IVORY POLYCOTTON
156 x 92 x 118mm
LS162



WHITE POLYCOTTON
156 x 92 x 118mm
LS162-WHT



BLACK POLYCOTTON
156 x 92 x 118mm
LS162-BLK



GREY CHIFFON
156 x 92 x 118mm
LS200



GOLD CHIFFON
152 x 95 x 140mm
LS166



BROWN FAUX-SILK
180 x 90 x 135mm
LS150



CHOCOLATE POLYCOTTON
158 x 117 x 133mm
LS161

HOSPITALITY SHADES AND FIXTURES



WALL LIGHTS - STEP 1 : Choose the size and style of your shade

COOPER

A curved half-moon wall light with diffuser and finial options.



DL-COOPER-S

W: 190mm H: 230mm P: 128mm
shown in Loaf Faux Silk (DL-020PLN046)



DL-COOPER-M

W: 290mm H: 230mm P: 128mm
shown in Titanium Faux Silk (DL-020PLN041)



FABRIC OPTIONS

Shades can be made in Silk,
Faux Silk and Polycotton.



DL-COOPER-L

W: 390mm H: 230mm P: 135mm
shown in Ivory Faux Silk (DL-030PLN067)



DL-RILEY-S
W: 170mm H: 230mm P: 128mm
shown in Orchid Silk (DL-010PLN019)



FABRIC OPTIONS
Shades can be made in Silk,
Faux Silk and Polycotton.

RILEY

A square edged half-wall light with
diffuser and finial options.



DL-RILEY-M
W: 270mm H: 230mm P: 128mm
shown in Breton Faux Silk (DL-020PLN056)



DL-RILEY-L
W: 370mm H: 230mm P: 128mm
shown in Olive Faux Silk (DL-030PLN066)

WALL LIGHTS - STEP 2 : Choose your backplate finish



AB
1lt backplate shown in
Aged Brass



PC
2lt backplate shown in
Polished Chrome

CRAFT YOUR CODE

Small and medium wall lights come with a 1-light backplate. Large wall lights come with a 2-light backplate. You can choose whether this is finished in Aged Brass or Polished Chrome.

Simply add a hyphen and the code for the finish after the code of your chosen wall light.

For example DL-COOPER-M-PC would be the code for a curved wall light medium size with a one-light backplate in Polished Chrome finish.

Patinated finishes are available by special order.

WALL LIGHTS - STEP 3 : Choose your fabric

Choose from the many stock colour options in Silk (p10), Faux Silk (p11), or Polycotton (p16).

Additional colours are available as special orders.

Printed cotton fabrics may be selected or supplied but our shade department will test the fabric suitability upon request before confirming the order.



WALL LIGHTS - STEP 4 : Choose your accessories

DIFFUSERS

A gloss finish opal acrylic diffuser can be added to any wall light.

Code	Description
DL-CWD-S	COOPER opal diffuser - small
DL-CWD-M	COOPER opal diffuser - medium
DL-CWD-L	COOPER opal diffuser - large
DL-RWD-S	RILEY opal diffuser - small
DL-RWD-M	RILEY opal diffuser - medium
DL-RWD-L	RILEY opal diffuser - large



FINIALS

Optional finials are available to add to the Cooper or Riley wall lights. They can be used both above and below the backplate. Standard finishes are Polished Chrome or Aged Brass. Silver/Gold patinated finish and Graphite are available on special order.



DL-RNDFIN-SG
Silver/Gold finial
shown with large shade



DL-RNDFIN-AB
Aged Brass finial
shown with medium shade



DL-RNDFIN-PC
Polished Chrome finial
shown with medium shade



DL-HEXFIN-GR
Graphite finial
shown with medium shade



DL-HEXFIN-PC
Polished Chrome finial
shown with small shade



DL-HEXFIN-AB
Aged Brass finial
shown with small shade

PENDANTS - STEP 1 : Choose the size of your shade

PEARCE

A cylindrical pendant supplied with 2000mm suspension wires and choice of ceiling pan and finial finishes.



DL-PEARCE14
W: 356mm H: 232mm
shown in Ivory Faux Silk (DL-030PLN067)



DL-PEARCE26
W: 660mm H: 252mm
shown in Titanium Faux Silk (DL-020PLN041)



FABRIC OPTIONS
Shades can be made in Silk, Faux Silk and Polycotton.



DL-PEARCE30
W: 762mm H: 262mm
shown in Breton Faux Silk (DL-020PLN056)



DL-PEARCE18
W: 457mm H: 232mm
shown in Orchid Silk (DL-010PLN019)



DL-PEARCE22
W: 559mm H: 242mm
shown in Loaf Faux Silk (DL-020PLN046)



DL-PEARCE34
W: 864mm H: 272mm
shown in Olive Faux Silk (DL-030PLN066)

PENDANTS - STEP 2 : Choose the number of lights

Shade width	Recommended Lights
34 inch (864mm)	7 light suspension
30 inch (762mm)	7 light suspension
26 inch (660mm)	5 light suspension
22 inch (559mm)	5 light suspension
18 inch (457mm)	3 light suspension
14 inch (356mm)	3 light suspension



5LT
5 light suspension



3LT
3 light suspension

CRAFT YOUR CODE

Simply add a hyphen and the code for the light suspension after the code of your chosen pendant.

For example DL-PEARCE30-7LT would be the code for a 30 inch wide pendant with a 7 light suspension.



7LT
7 light suspension

PENDANTS - STEP 3 : Choose the finish of the ceiling pan and finial



PC
Polished Chrome



AB
Aged Brass

CRAFT YOUR CODE

Add a hyphen and the code for the finish after the code of your chosen pendant and number of lights.

For example DL-PEARCE30-7LT-PC would be the code for a 30 inch wide pendant with a 7 light suspension and Polished Chrome finish.

PENDANTS - STEP 4 : Choose your fabric

Choose from the many stock colour options in Silk (p10), Faux Silk (p11), or Polycotton (p16).

Additional colours are available as special orders.

Printed cotton fabrics may be selected or supplied but our shade department will test the fabric suitability upon request before confirming the order.



PENDANTS - STEP 5 : Choose your accessories



DIFFUSERS

All Pearce pendants come with a gloss finish opal acrylic diffuser for the bottom of shade, where the finial is attached.

Additional diffusers can be purchased for the top of the shade if required.

Code	Description
DL-PD-14	Diffuser for 14 inch diameter pendants
DL-PD-18	Diffuser for 18 inch diameter pendants
DL-PD-22	Diffuser for 22 inch diameter pendants
DL-PD-26	Diffuser for 26 inch diameter pendants
DL-PD-30	Diffuser for 30 inch diameter pendants
DL-PD-34	Diffuser for 34 inch diameter pendants

CEILING FLUSH - STEP 1 : Choose the size of your shade

FLETCHER

A cylindrical shade for fixing flush to the ceiling with finial finish choices of Polished Chrome or Aged Brass.



DL-FLETCHER22
W: 559mm H: 262mm
shown in Loaf Faux Silk (DL-020PLN046)



DL-FLETCHER30
W: 762mm H: 282mm
shown in Breton Faux Silk (DL-020PLN056)



FABRIC OPTIONS
Shades can be made in Silk, Faux Silk and Polycotton.



DL-FLETCHER26
W: 660mm H: 272mm
shown in Titanium Faux Silk (DL-020PLN041)



DL-FLETCHER34
W: 864mm H: 292mm
shown in Olive Faux Silk (DL-030PLN066)



DL-FLETCHER18
W: 457mm H: 252mm
shown in Orchid Silk (DL-010PLN019)



DL-FLETCHER14
W: 356mm H: 252mm
shown in Ivory Faux Silk (DL-030PLN067)

CEILING FLUSH - STEP 2 : Choose the number of lights

Shade width	Recommended Lights
34 inch (864mm)	7 light flush
30 inch (762mm)	7 light flush
26 inch (660mm)	5 light flush
22 inch (559mm)	5 light flush
18 inch (457mm)	3 light flush
14 inch (356mm)	3 light flush



3LT
3 light flush



5LT
5 light flush

CRAFT YOUR CODE

Simply add a hyphen and the code for the number of lights after the code of your chosen pendant.

For example DL-FLETCHER30-7LT would be the code for a 30 inch wide pendant with 7 lights.



7LT
7 light flush

CEILING FLUSH - STEP 3 : Choose the finish of the finial



PC
Polished Chrome



AB
Aged Brass

CRAFT YOUR CODE

Add a hyphen and the code for the finish after the code of your chosen pendant and number of lights.

For example DL-FLETCHER30-7LT-PC would be the code for a 30 inch wide flush shade with a 7 light ceiling pan and a Polished Chrome finial.

CEILING FLUSH - STEP 4 : Choose your fabric

Choose from the many stock colour options in Silk (p10), Faux Silk (p11), or Polycotton (p16).

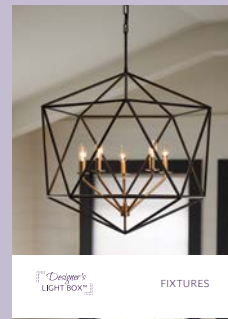
Additional colours are available as special orders.

Printed cotton fabrics may be selected or supplied but our shade department will test the fabric suitability upon request before confirming the order.



Designer's
LIGHT BOX™ FIXTURES

CATALOGUE NOW AVAILABLE



To request a catalogue: email sales@elsteadlighting.com or download from elsteadlighting.com

UK HEAD OFFICE

Elstead Lighting Ltd.
Elstead House, Mill Lane, Alton,
Hampshire, GU34 2QJ, UK

UK SALES

T: 01420 82377
F: 01420 89261
E: enquiries@elsteadlighting.com

SHADE SALES

T: 01420 82377
F: 01420 89261
E: shades@elsteadlighting.com

EXPORT SALES

T: +44 (0) 1420 590509
F: +44 (0) 1420 590005
E: export@elsteadlighting.com

ELSTEAD EUROPEAN OFFICE

Elstead Lighting Sp. z o.o.
ul. Sportowa 12
32-083 Balice, Poland

T: +48 124441091
F: +48 124441966
E: biuro@elstead-lighting.pl

ELSTEAD SLOVAKIA

Elstead Lighting, S. R. O.
Villa Hungaria, Razušova 9
Piestany, 92101, Slovakia
T: +421 (0) 940 853483
E: sales@elsteadlighting.sk


Designer's
LIGHT BOX™

BY  **Elstead**
LIGHTING